

State of Wyoming Corner Record

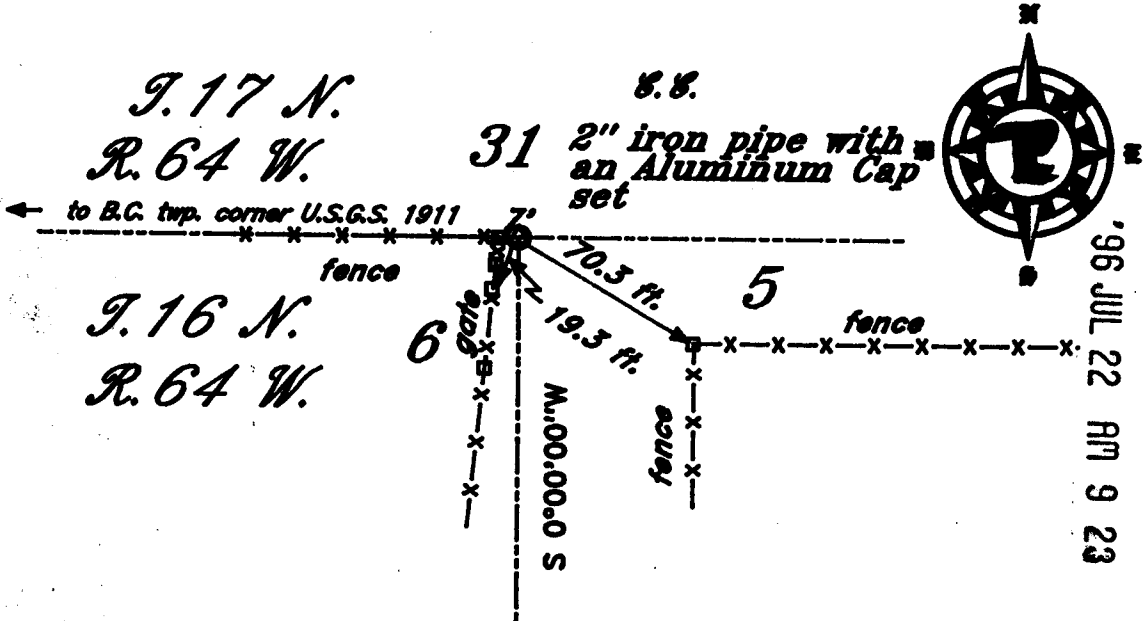
(In compliance with the *CORNER PERPETUATION AND FILING ACT*, Wyoming Statutes, 1977, Section 36-11-101, et, seq., and the Rules and Regulations of the Board of Registration for Professional Engineers and Professional Land Surveyors)

Reverse side of this form may be used if more space is needed.

Record of original survey and citation of source of historical information (if corner is lost or obliterated). Description of corner monumentation evidence found and/or monument and accessories established to perpetuate the location of this corner. Sketch of relative location of monument, accessories, and reference points with course and distance to adjacent corner(s) (if determined in this survey). Method and rationale for reestablishment of lost or obliterated corner.

GLO Notes: North between Sec. 5 & 6 81.15 chains to a point on the 4th std. parallel. falling west 7.90 chains from the std. corner of sec 31&32 of T.17 N., R.64 W.

Searched 4 miles East but could not find corners or evidence. Found a USGS BM being a 4" B.C. marked for the Twp, Corner set in 1911.



This Closing Corner being a 2"X36" Iron pipe with an Aluminum Cap was set according to parol evidence supplied by adjoining land owners and physical evidence on the site. These data were compiled and the Closing Corner was set according to my professional judgement.

Three weeks were spent during the month of June & July 1996 searching for corners to reestablish these corners.

Date of Field Work: July A.D. 1996 Office Reference: _____

CROSS INDEX DIAGRAM

Firm/Agency, Address

1	2	3	4	5	6	7	8	9	10	11	12	13	14	15	16	17	18	19	20	21	22	23	24	25	
A																									A
B	6																								B
C		5																							C
D			4																						D
E				3																					E
F					2																				F
G	7																								G
H		8																							H
I			9																						I
J				10																					J
K					11																				K
L						12																			L
M	18																								M
N		17																							N
O			16																						O
P				15																					P
Q					14																				Q
R						13																			R
S							12																		S
T								11																	T
U									10																U
V										9															V
W											8														W
X												7													X
Y													6												Y
Z														5											Z
	1	2	3	4	5	6	7	8	9	10	11	12	13	14	15	16	17	18	19	20	21	22	23	24	25

Terrestrial Surveying & Mapping

P. O. Box 82

Cheyenne, WY 82003

Telephone Number: 307 634-9360

This corner record was prepared by me or under my direction and supervision.

SEAL & SIGNATURE



Corner Name: CC Section: 615 T. 16N R. 64W S. 64 P.M. Cross-Index No.: A:5